



## NEXT STEP™ *Luxury*

### Key Selling Feature:

- Provides cost savings when thicker, high color flooring is required

### Product Overview:

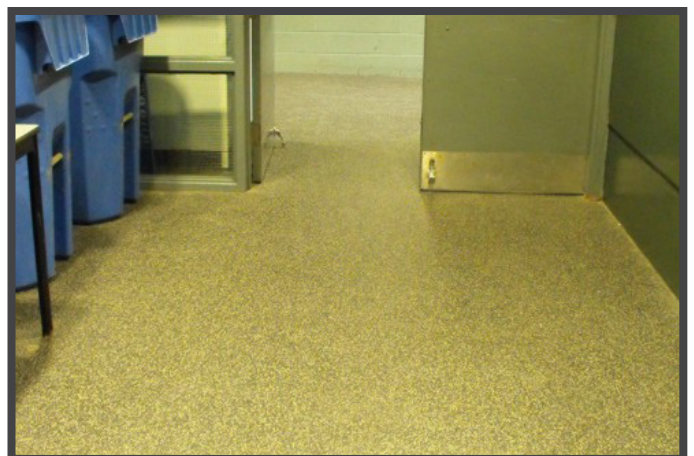
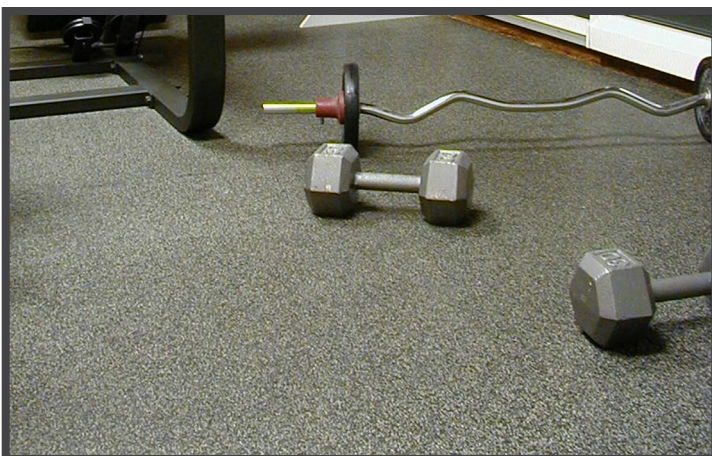
Created with our unique lamination technology, Dinoflex NEXT STEP™ Luxury provides clients with a cost-efficient option to update their commercial areas with a colorful, more durable surface. This line is available in many vibrant colors and has a high resistance to general wear and tear. NEXT STEP™ Luxury is the ideal choice for high traffic commercial and retail areas, as it provides high traction and superior sound reduction.

### Features:

- High traction
- Stain resistant
- Sound reducing
- High recycled content

### Best Applications:

- Projects with access flooring systems - 8mm interlocking
- Retail applications where thicker product is required because of rolling traffic
- Commercial fitness facilities where high color is preferred
- Residential fitness - high color at lower cost
- Corporate / Hospitality - fitness areas, staff break rooms
- LEED projects - high color with high recycled content



## Why choose NEXT STEP™ Luxury over the standard Evolution Tile in these applications?

- Excellent costs savings compared to 8mm and 10mm standard Evolution products.
- Provides increased post consumer recycled content without reducing color.
- Lower EPDM requirements for laminated high color product may reduce lead times.

## When is NEXT STEP™ Luxury the right product to offer?

- When cost savings are needed on a project, but color reduction is not an option.
- When commercial and sport projects require no glue installation, 8mm Luxury interlocking tiles are cost effective.
- When high color interlocking sport or commercial flooring is required, but budget is also a factor.

## Size and Thickness:

- 37" x 37" interlocking (no glue) and 38" x 38" square (glue down)
- 10mm – 3/8" (4mm top surface with 6mm recycled black backing)
- 8mm – 5/16" (4mm top surface with 4mm recycled black backing)

## Colors:

Please reference Color Guide for complete selection

- Sport Mat colors – Stone Line, Elite Line
- Evolution – Full line of 70 standard colors

## Warranty:

- 5-year good workmanship

## NEXT STEP™ Luxury Technical Data

TEST	DESCRIPTION	OVER 50% Color
ASTM C501	Taber Abrasion (H-22) 1000 cycles	0.1g wt. Loss
ASTM D2047	Static Coefficient of Friction (James Machine Method)	Dry 0.85, Wet 1.01
ASTM D2240	Hardness Shore A Durometer	75 Indentation
ASTM D3676	Density Foam Test	78.3 lbs/cu. ft.
ASTM D395B	Compression Set Under Force	95.3% Recovered
ASTM D412	Tensile Strength	286 lbs/sq. in.
ASTM F970-87	Static Load (1000 lbs)	.042 inch (10.6%) Residual Compression
ASTM F925	Chemical Resistance	No Change
ASTM G21	Mildew Resistance	No Mildew After 28 Days
CALIFORNIA 01350	Indoor Air Quality	Passed