

Stride **FITNESS TILES**

by dinoflex

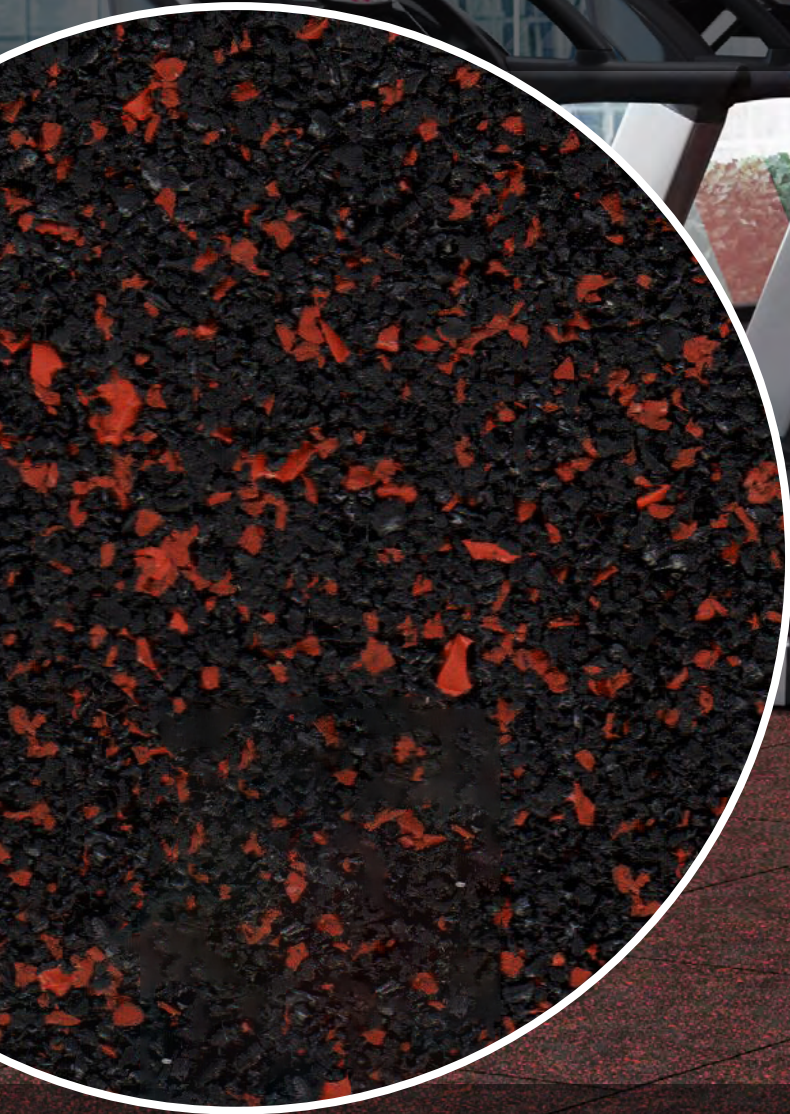
Stop Sound in its **Tracks**

EDUCATION ■ FITNESS ■ RECREATION ■ HOME GYMS



**RECYCLED
RUBBER
FLOORING**

Engineered with an impact absorbing grid to reduce sound and vibration, these tiles are the ideal interior flooring solution for workout areas located over occupied spaces. This molded recycled rubber tile features a color layer that is built to last and will not separate even with the heaviest of weights being dropped.



Superior Vibration
Absorption and
Unparalleled
Noise Reduction.

Looking for a solution to reduce sound transfer? Stop sound in its tracks with Dinoflex Stride Fitness Tiles; the ideal product to absorb and reduce noise.

Features

- Impact absorbing
- Sound reducing
- High traction
- Grid-backing
- Unique interlocking system
- Non-laminated color top layer
- Low odor
- Durable

Benefits

- Protects athletes and subfloors from dropped free weights
- Reduces sound transfer between adjacent occupied spaces
- Provides a safe non-slip surface to reduce risk of falls
- Route cables under the tiles and reduce tripping hazards
- Install over existing hard surface without adhesive
- Homogenous color construction, will not delaminate
- Low VOC and FloorScore Certified for healthier indoor air
- Withstands impact from heavy-duty equipment and workouts

Best For

Education

Fitness/Cardio

Hospitality

Recreation Centers

Weightlifting Area

Free Weight Area



Color: Citrine

Interlocking Tile

24" x 24" = 4ft²
(61cm x 61cm = 0.37m²)

STANDARD THICKNESS

1" (25mm)

1 ½" (38mm)*

2 ¾" (69.85mm)*

*Not recommended under
cardio equipment

Interlocking System

Dinoflex self-aligning interlocking system provides for a fast and accurate installation. Interlocking tubes are included with every order for a nominal cost.



Interlocking Pins



Interlocking Tubes



Interlocking Tile



Tile Back

Ramps and Wedges



1" Wedge



1.5" Wedge



1" ADA WheelChair Ramp



1.5" ADA WheelChair Ramp



1.5" Inside Corner

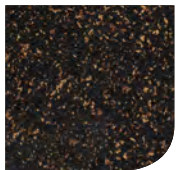


1.5" Outside Corner

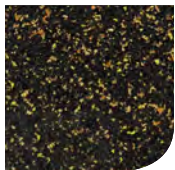
Color Swatches



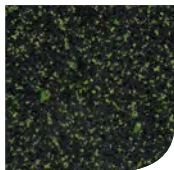
BLACK



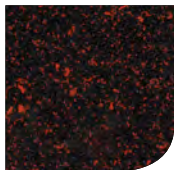
AMBER



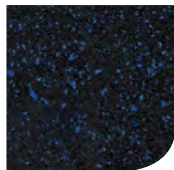
CITRINE



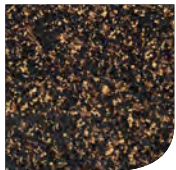
EMERALD



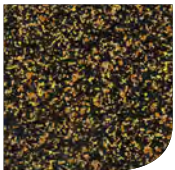
RUBY



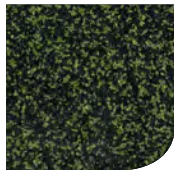
TOPAZ



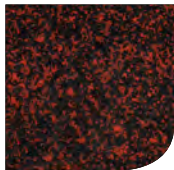
JASPER



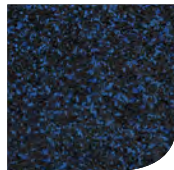
QUARTZ



JADE



GARNET



SAPPHIRE

Contact your Sales Representative for more information.

Colors shown are reproduced as closely as possible to actual product. Contact Dinoflex for product sample.



Click here to design your own Recycled Rubber Color.



Testing Results

DESCRIPTION	TEST	LESS 50% COLOR	OVER 50% COLOR
Sound Absorption (SAA) / Noise Reduction Coefficient (NRC)	ASTM C423	SAA 0.34 NRC 0.35	
Compression Set	ASTM D395	(Method A) -2.1% (Method B) -2.2%	(Method A) -2.0% (Method B) -1.9%
Breaking Load / Elongation / Tenacity	ASTM D412	Breaking Load = 63.81 lbs Elongation = 99.50% Tenacity = 124.5 lbs/sq in	Breaking Load = 91.77 lbs Elongation = 107.18% Tenacity = 174.31 lbs/sq in
Static Coefficient of Friction	ASTM D2047	Dry 0.65; Wet 0.67	Dry 0.65; Wet 0.67
Hardness Shore A Durometer	ASTM D2440	65	68
Taber Abrasion	ASTM D4060	Weight Loss 0.33 Grams (0.18%)	Weight Loss 0.40 Grams (0.21%)
Sound Transmission Loss	ASTM E90	STC - 53	
Impact Sound Transmission	ASTM E492	IIC 67 - Black IIC 58 - 20% Color	
Critical Radiant Flux	ASTM E648	0.99 watts/square cm - 1.5" Black with Fire Retardant Top	
Critical Radiant Flux - (15 min burn)	ASTM E648 (NY)	0.99 watts/square cm - 1.5" Black with Fire Retardant Top	
Static Load (1,000 lbs)	ASTM F970	Residual Compression -0.006 In	Residual Compression -0.008 In
Acoustics Measurement of Sound Insulation	ISO 10140-3	Bare Massive Floor Ln,w= 88dB, With Floor Covering Ln,w= 40dB	

Please Note: All measurements are subject to nominal variation.

Dinoflex
P.O. Box 3309
5590 46 Ave SE
Salmon Arm, BC, Canada
V1E 4S1

Toll Free: 1-877-713-1899
Direct: 250-832-7780
sales@dinoflex.com
dinoflex.com



**5 year
Limited Warranty**

when installed in accordance with
Dinoflex's Installation Guidelines.

Date Issued: