



## The logo for Armor-X by dinoflex, featuring a stylized window icon to the left of the brand name "Armor-X" in a large, bold, white font. Below "Armor-X", the text "by dinoflex" is written in a smaller, lowercase font.

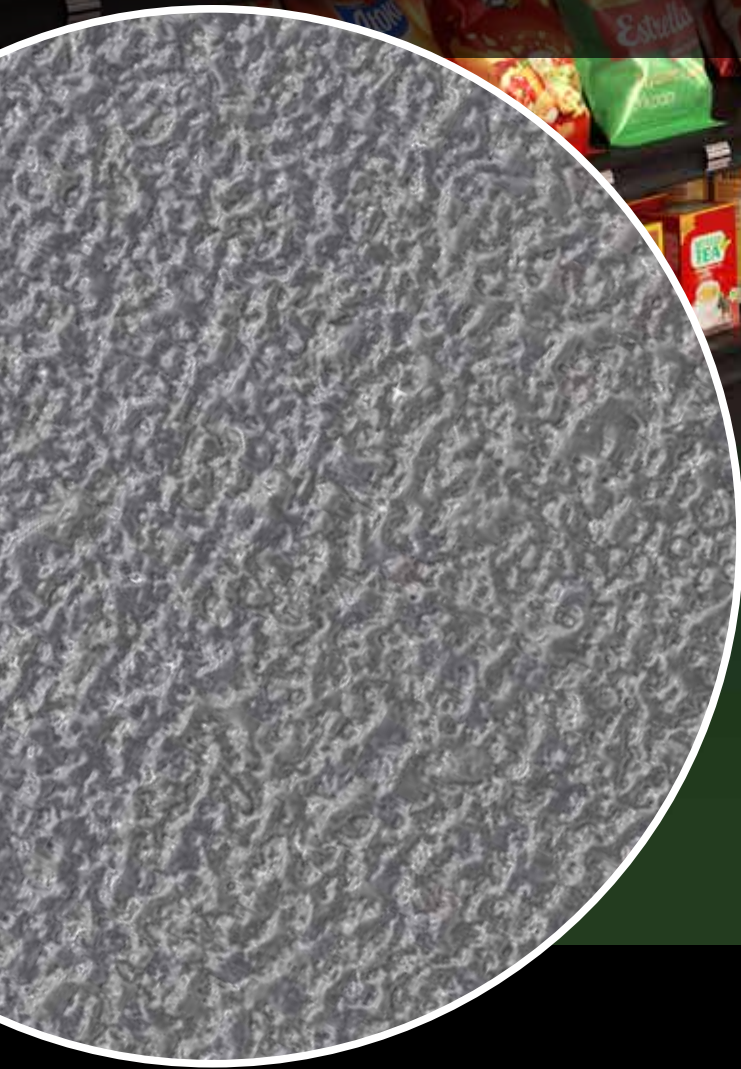
Need a Hero?

FITNESS ■ SPORT ■ COMMERCIAL ■ RETAIL ■ HOSPITALITY ■ EDUCATION



RECYCLED  
RUBBER  
FLOORING

Armor-X is the only flooring of its kind, featuring an invincible polyurethane wear layer fused to exceptionally durable Dinoflex backing options, tailored to different environments. For fitness facilities, the NEXT STEP® High Impact backing is recommended, providing maximum resilience, shock absorption, and durability to withstand heavy weights and high-intensity activity. For retail and commercial spaces, the NEXT STEP® WalkSoft backing is the ideal choice, offering enhanced underfoot comfort, superior sound absorption, and a more forgiving surface for employees and customers who spend long hours on their feet.



With striking color blends, exceptional durability, and a self-healing wear layer that eliminates indentations from pressure points and rolling loads, Armor-X is designed to perform in high-traffic areas. It cleans easily, reducing maintenance time and costs, while its array of solid colors ensures a lasting, stylish solution that will outlast the competition in any setting.

## Features

- Extremely durable and rugged
- Non-porous wear layer
- Impervious to most liquids
- Impact absorbing
- Self-healing wear layer
- Low VOC, free from PVS & Halogens

## Benefits

- Long lasting, high performance
- Reduces odor & hygiene concerns
- Reduce the incidence of staining from harsh chemicals or dyes
- Reduces soreness & fatigue in muscles & joints
- Indentations from pressure points simply disappear
- FloorScore® certified

## Best For

Fitness Centers

Ski Resorts

Recreations Centers

Weightlifting Areas

Commercial

Retail



Color: Watermelon

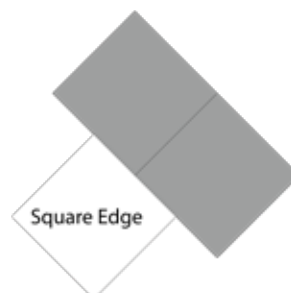
Tolerance of +/- 0.5mm

### Square Cut Glue Down

38" x 38" = 10.0ft<sup>2</sup>  
(96.5cm x 96.5cm = 0.93m<sup>2</sup>)

**STANDARD FORMULATION**  
(2mm or 3mm top wear layer)  
(Available in Square + Interlocking)

2mm + 4mm = 6mm (1/4"),  
2mm + 6mm = 8mm (5/16"),  
3mm + 5mm = 8mm (5/16"),  
2mm + 8mm = 10mm (3/8"),  
3mm + 7mm = 10mm (3/8"),  
2mm + 10mm = 12mm (1/2"),  
3mm + 9mm = 12mm (1/2")



### Interlocking Loose Lay

37" x 37" = 9.5ft<sup>2</sup>  
(94cm x 94cm = 0.88m<sup>2</sup>)

**SKATE FORMULATION**  
(2mm or 3mm top wear layer)  
(Available in Square + Interlocking)

2mm + 4mm = 6mm (1/4"),  
2mm + 6mm = 8mm (5/16"),  
3mm + 5mm = 8mm (5/16"),  
2mm + 8mm = 10mm (3/8"),  
3mm + 7mm = 10mm (3/8"),  
2mm + 10mm = 12mm (1/2"),  
3mm + 9mm = 12mm (1/2")





# Color Swatches

## Standard Colors



BLACKBERRY - AX11



BLUEBERRY - AX14



ELDERBERRY - AX13



TAMARIND - AX15

## Specialty Colors



CANTALOUPE  
- AX24



DRAGON FRUIT  
- AX12



HUCKLEBERRY  
- AX21



PLUM - AX32



POMEGRANATE  
- AX19



WATERMELON  
- AX23

Contact your Sales Representative for more information.

Colors shown are reproduced as closely as possible to actual product. Contact Dinoflex for product sample.





## Testing Results

DESCRIPTION	TEST METHOD	RESULT
Breaking Load / Elongation / Tensile	ASTM D412	Breaking Load: 87.80 lbs
		Elongation: 138.65%
		Tensile: 501.7 lbs/sq in.
Coefficient of Friction	ASTM D2047	0.97 Dry
Abrasion Resistance	ASTM D4060	Weight Loss = 0.56 Grams (0.86%)
Critical Radiant Flux	ASTM E648	CRF 0.07 watts/square cm
Critical Radiant Flux (with Fire Retardant)	ASTM E648	CRF 0.52 watts/square cm (with Fire Retardant)
Flexibility	ASTM F137	Passes 6 mm Mandrel
Static Load	ASTM F970	250 lbs: 0.001 Inch Residual Compression
Short Term and Residual Indentation	ASTM F1914	140 lbs: -0.012 in. (3.74%) Residual Indentation
Compression Set		25% Compression Set, -7.6%

Please Note: All measurements are subject to nominal variation.

Dinoflex  
 P.O. Box 3309  
 5590 46 Ave SE  
 Salmon Arm, BC, Canada  
 V1E 4S1

Toll Free: 1-877-713-1899  
 Direct: 250-832-7780  
[sales@dinoflex.com](mailto:sales@dinoflex.com)  
[dinoflex.com](http://dinoflex.com)

**5-year limited warranty**  
 when installed in accordance with  
 Dinoflex's Installation Guidelines.

Date Issued: April 2025



CERTIFIED BY  
 SCS Global Services